



Общество с ограниченной ответственностью «Викинг кран технолоджи» (ООО «ВКТ»)
 198205, Город Санкт-Петербург, Таллинское ш. (Старо-Паново), д. 198, корп. 2, лит. В, пом. 29
 Телефон: +7 (812) 612-99-84
 Отдел аренды +7 (921) 948 13 16
 E-mail: info@vikingcrane.ru
 Web: <http://www.vikingcrane.ru>

Вылет - грузоподъемность (метры - тонны)

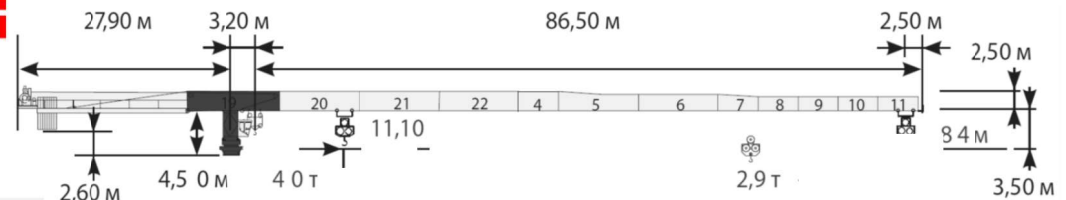
| Rmax | P max | R Pmax | 19m | 24m | 29m | 34m | 39m | 44m | 49m | 54m | 59m | 64m | 69m | 74m | 79m | 84m |
|------|-------|--------|--------|--------|--------|--------|--------|--------|--------|--------|--------|-------|-------|-------|-------|------|
| 84m | 40t | 11,1m | 22,3t | 17,08t | 13,65t | 11,24t | 9,44t | 8,05t | 6,95t | 6,05t | 5,3t | 4,67t | 4,13t | 3,67t | 3,26t | 2,9t |
| | 20t | 21,5m | 20,0t | 17,7t | 14,25t | 11,81t | 10,0t | 8,6t | 7,49t | 6,58t | 5,82t | 5,19t | 4,64t | 4,17t | 3,76t | 3,4t |
| 79m | 40t | 12,7m | 25,99t | 20,04t | 16,14t | 13,39t | 11,35t | 9,76t | 8,51t | 7,48t | 6,63t | 5,91t | 5,3t | 4,76t | 4,3t | |
| | 20t | 24,7m | 20,0t | 20,0t | 16,73t | 13,96t | 11,9t | 10,3t | 9,04t | 8,0t | 7,15t | 6,42t | 5,8t | 5,27t | 4,8t | |
| 74m | 40t | 13,9m | 28,67t | 22,2t | 17,97t | 14,98t | 12,75t | 11,03t | 9,67t | 8,55t | 7,63t | 6,85t | 6,18t | 5,6t | | |
| | 20t | 27,1m | 20,0t | 20,0t | 18,54t | 15,54t | 13,3t | 11,57t | 10,19t | 9,07t | 8,14t | 7,35t | 6,68t | 6,1t | | |
| 69m | 40t | 15,0m | 31,13t | 24,19t | 19,65t | 16,44t | 14,05t | 12,21t | 10,74t | 9,55t | 8,55t | 7,72t | 7,0t | | | |
| | 20t | 29,3m | 20,0t | 20,0t | 20,0t | 16,99t | 14,59t | 12,74t | 11,26t | 10,06t | 9,06t | 8,22t | 7,5t | | | |
| 64m | 40t | 16,8m | 35,22t | 27,45t | 22,36t | 18,77t | 16,1t | 14,03t | 12,39t | 11,05t | 9,94t | 9,0t | | | | |
| | 20t | 32,6m | 20,0t | 20,0t | 20,0t | 19,12t | 16,46t | 14,41t | 12,77t | 11,44t | 10,33t | 9,4t | | | | |
| 59m | 40t | 17,3m | 36,34t | 28,34t | 23,1t | 19,4t | 16,64t | 14,52t | 12,82t | 11,45t | 10,3t | | | | | |
| | 20t | 33,9m | 20,0t | 20,0t | 20,0t | 19,93t | 17,17t | 15,03t | 13,33t | 11,95t | 10,8t | | | | | |
| 49m | 40t | 17,9m | 37,57t | 29,31t | 23,9t | 20,08t | 17,24t | 15,05t | 13,3t | | | | | | | |
| | 20t | 34,9m | 20,0t | 20,0t | 20,0t | 20,0t | 17,75t | 15,55t | 13,8t | | | | | | | |
| 39m | 40t | 18,0m | 37,89t | 29,57t | 24,11t | 20,26t | 17,4t | | | | | | | | | |
| | 20t | 35,2m | 20,0t | 20,0t | 20,0t | 20,0t | 17,9t | | | | | | | | | |

40T

Высота под крюком, метров

№ секции

| | | |
|----|----------------|------------|
| 17 | 73,4 | |
| 16 | 67,4 | |
| 15 | 61,4 | |
| 14 | 55,4 | |
| 13 | 49,4 | 53,6 |
| 12 | 43,4 | 47,6 |
| 11 | 37,4 | 41,6 |
| 10 | 31,4 | 35,6 |
| 9 | 25,4 | 29,6 |
| 8 | 19,4 | 23,6 |
| 7 | 13,4 | 17,6 |
| 6 | 7,4 | 11,6 |
| 5 | HD23 R26 | HD23 FP |
| 4 | Усилен. анкера | Рама 8x8 м |



| | |
|---|--------------------------------|
| Грузовая лебедка | 94кВт |
| Лебедка каретки | 15кВт |
| Двигатели поворота | 2 x 18кВт |
| Рекомендуемая мощность источника питания | 350кВА (ДГУ) 200кВА (город) |

TEREX CTT721-40